

# ACCEPTED DONATIONS



**Non-perishable foods**



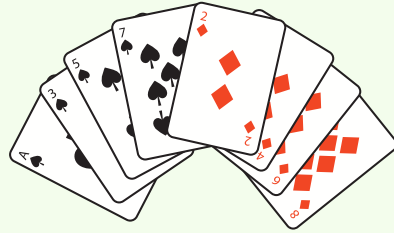
**Unused cleaning supplies**



**School supplies and books**



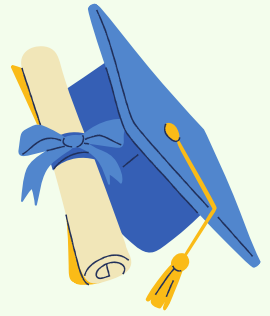
**Unused toiletries**



**Toys and games**



**Electronics in good, working condition**



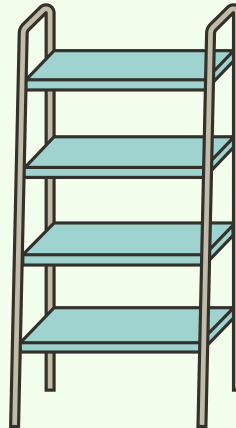
**Cap and gown**



**Lightly used shoes**



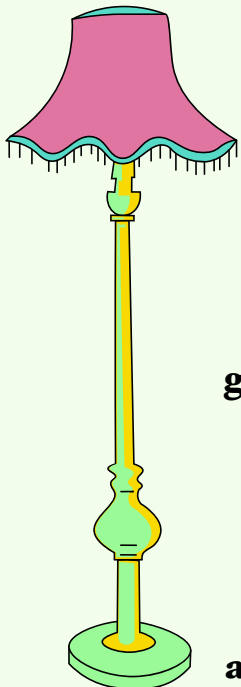
**Lightly used towels and linens**



**Shelving and storage (unbroken)**



**Small furniture (including mirrors)**



**Kitchen appliances in good, working condition**



**Lighting and Decor**

**Shelving and storage (unbroken)**



**Kitchenware**



**Lightly used clothing**